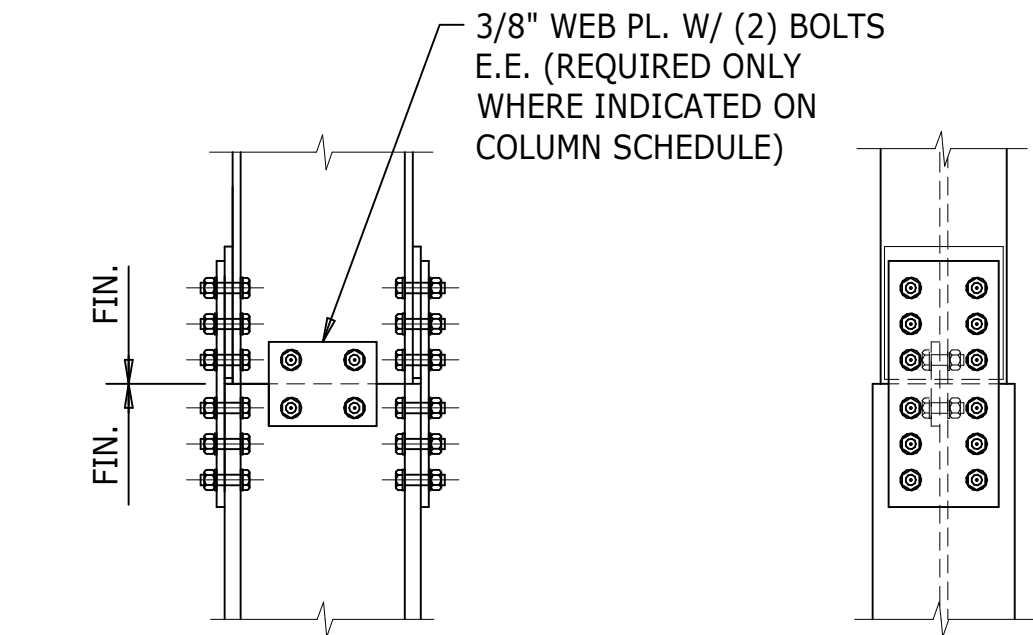


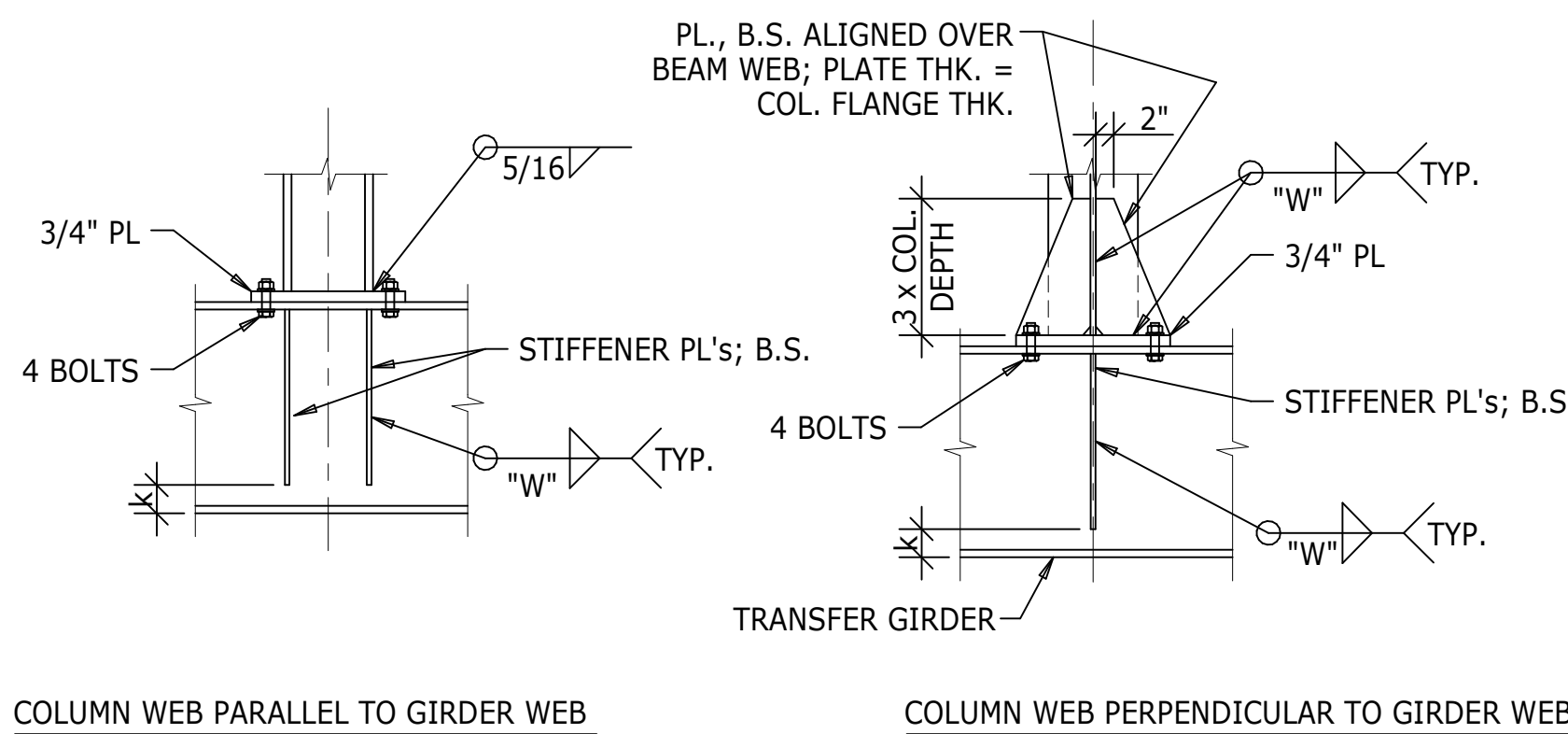
- NOTES:
1. HEADED STUDS SHALL BE INSTALLED IN SYMMETRICAL PATTERN ABOUT CENTERLINE OF STEEL BEAM.
 2. MINIMUM REQUIRED EDGE DISTANCE FROM STUDS TO VERTICAL EDGE OF CONCRETE = 4".
 3. MAXIMUM PERMITTED CONNECTION ECCENTRICITY = 3".
 4. HORIZONTAL AND VERTICAL REINFORCING STEEL SHALL OCCUR BETWEEN EACH ROW AND EACH COLUMN OF STUDS AND SHALL EXTEND 2'-0" MIN. BEYOND STUD GROUP EACH END, EACH WAY. WHERE REINFORCING STEEL DOES NOT OCCUR AT THE REQUIRED LOCATIONS PROVIDE #4 BARS TO MEET CRITERIA.
 5. SEE "BEAM BEARING ON CONCRETE WALL" DETAIL FOR ALTERNATIVE BEAM CONNECTION TO CONCRETE WALLS (CONTRACTOR'S OPTION).
 6. SIZE PLATE TO ACCOMMODATE MIS-LOCATION BY 6" IN ANY DIRECTION.

1 STRUCTURAL STEEL CONNECTION TO CAST-IN-PLACE CONCRETE



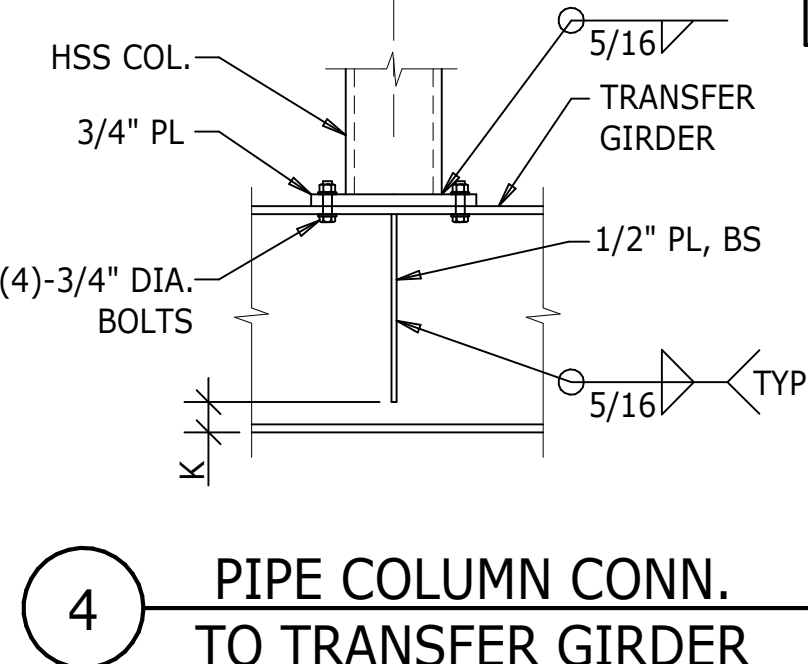
- NOTES:
1. COLUMN SPLICES SHALL BE PROVIDED ONLY AT LOCATIONS WHERE SPLICES ARE INDICATED ON COLUMN SCHEDULE.
 2. PROVIDE BOLTED OR WELDED SPLICES PER THE AISC STEEL CONSTRUCTION MANUAL, 13TH EDITION, PART 14, UNLESS NOTED OTHERWISE.
 3. ALL BOLTS SHALL BE FULLY PRETENSIONED.
 4. SPLICES SHALL BE LOCATED 4'-0" MAXIMUM ABOVE THE FINISHED FLOOR.
 5. SPLICES LOCATED MORE THAN 4'-0" ABOVE FINISHED FLOOR AND SPLICES AT LOCATIONS NOT SPECIFICALLY INDICATED ON THE COLUMN SCHEDULE SHALL BE DETAILED TO DEVELOP 75% OF THE FULL TENSION CAPACITY OF THE COLUMN.

2 W SHAPE COLUMN SPLICE



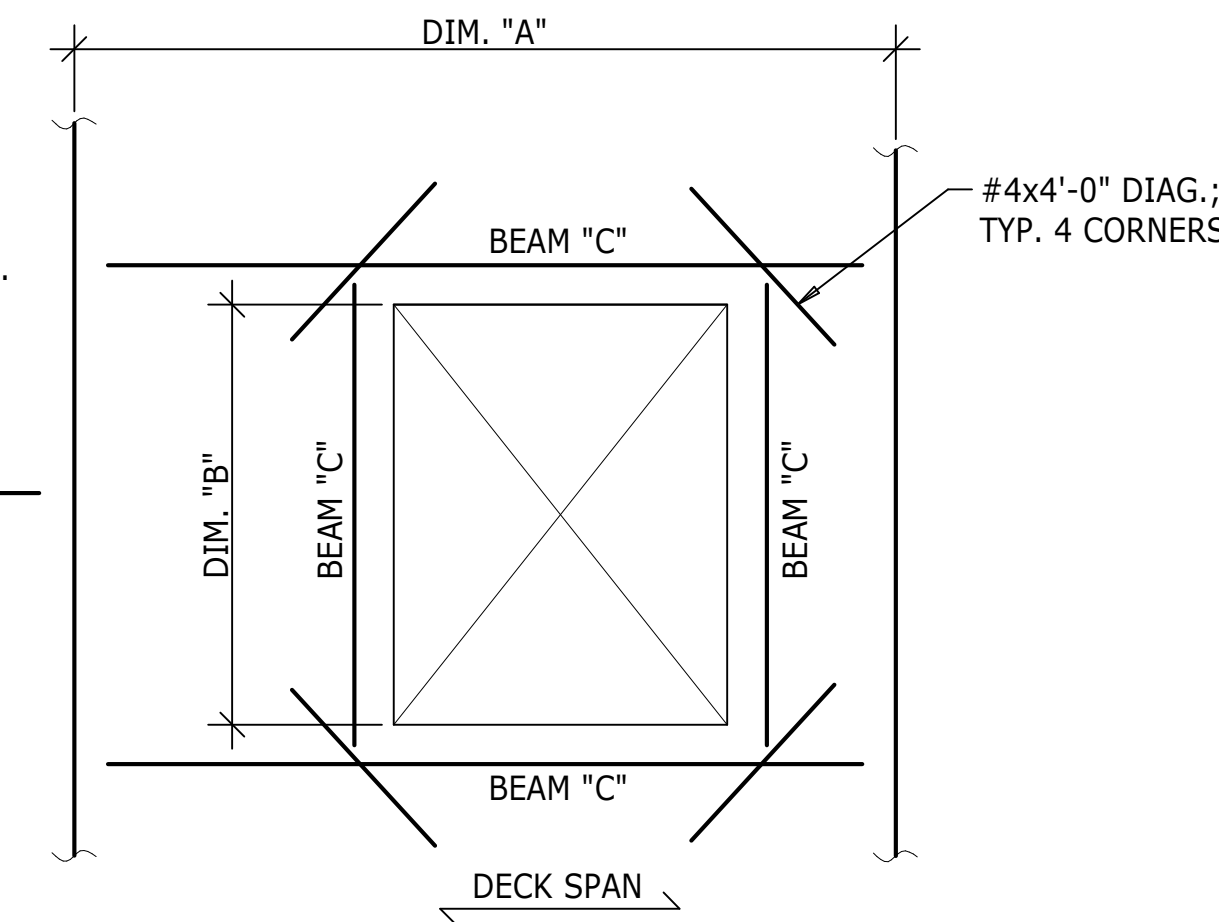
- NOTES:
1. STIFFENER PL. THICKNESS = COLUMN FLANGE THICKNESS.
 2. OUTER EDGES OF STIFFENER PL's TO ALIGN W/ EDGE OF TRANSFER GIRDER FLANGE.
 3. SIZE OF FILLET WELD "W":
"W" = 5/16" FOR STIFFENER PLATES < 1" THK.
"W" = 3/8" FOR STIFFENER PLATES 1" TO 1 1/4" THK.
"W" = 1/2" FOR STIFFENER PLATES > 1 1/4" THK.

3 W COLUMN CONNECTION TO TRANSFER GIRDER



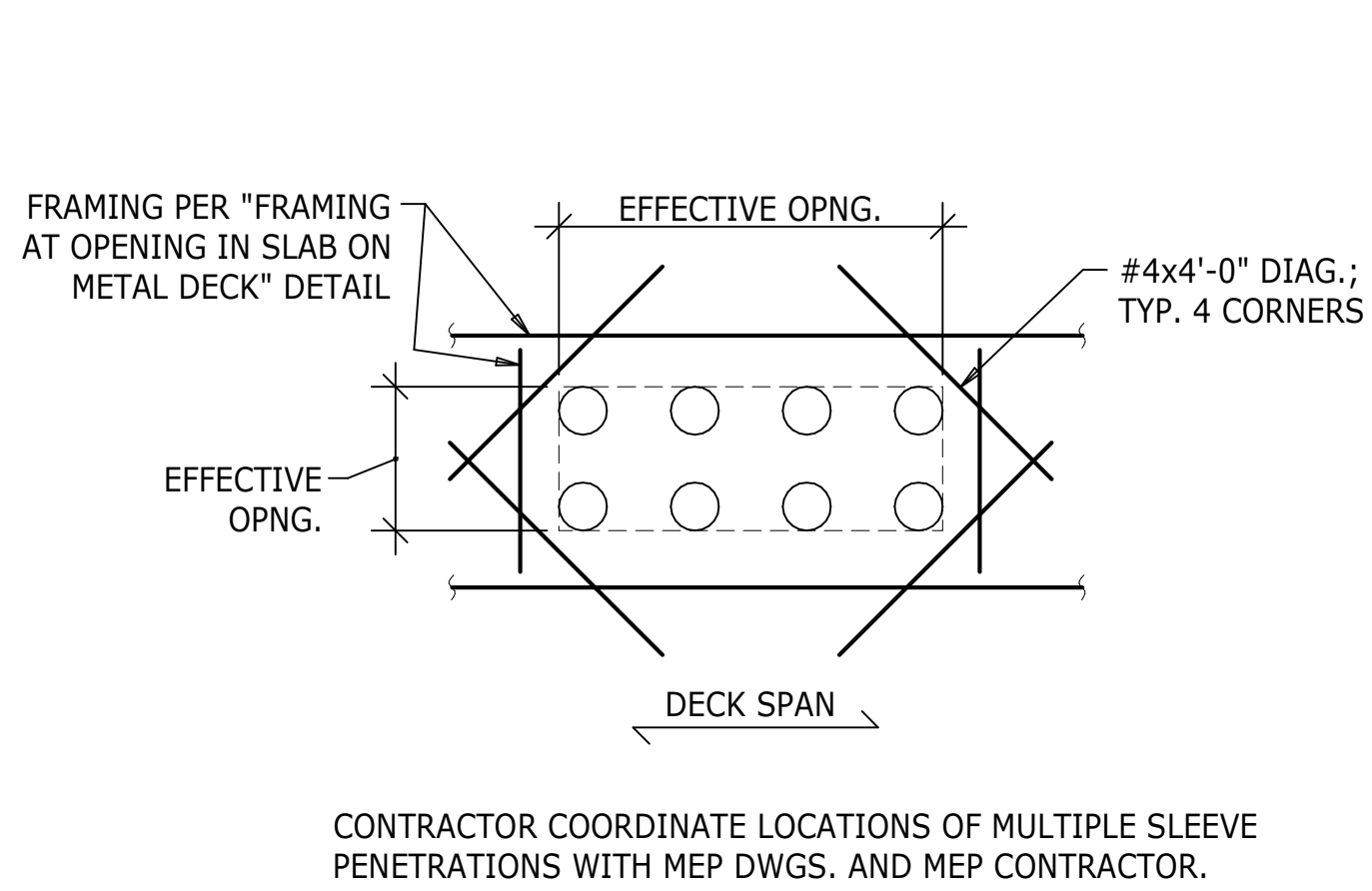
4 PIPE COLUMN CONNECTION TO TRANSFER GIRDER

DIM "A"	DIM "B"	BEAM "C"	FACTORED BEAM REACTION
≤ 6'-0"	1'-1" TO 3'-0"	C6X8.2	10k
	3'-1" TO 5'-0"	C8x11.5	10k
6'-1" TO 11'-0"	1'-1" TO 4'-11"	W8x10	15k
	5'-1" TO 10'-0"	W10x12	15k

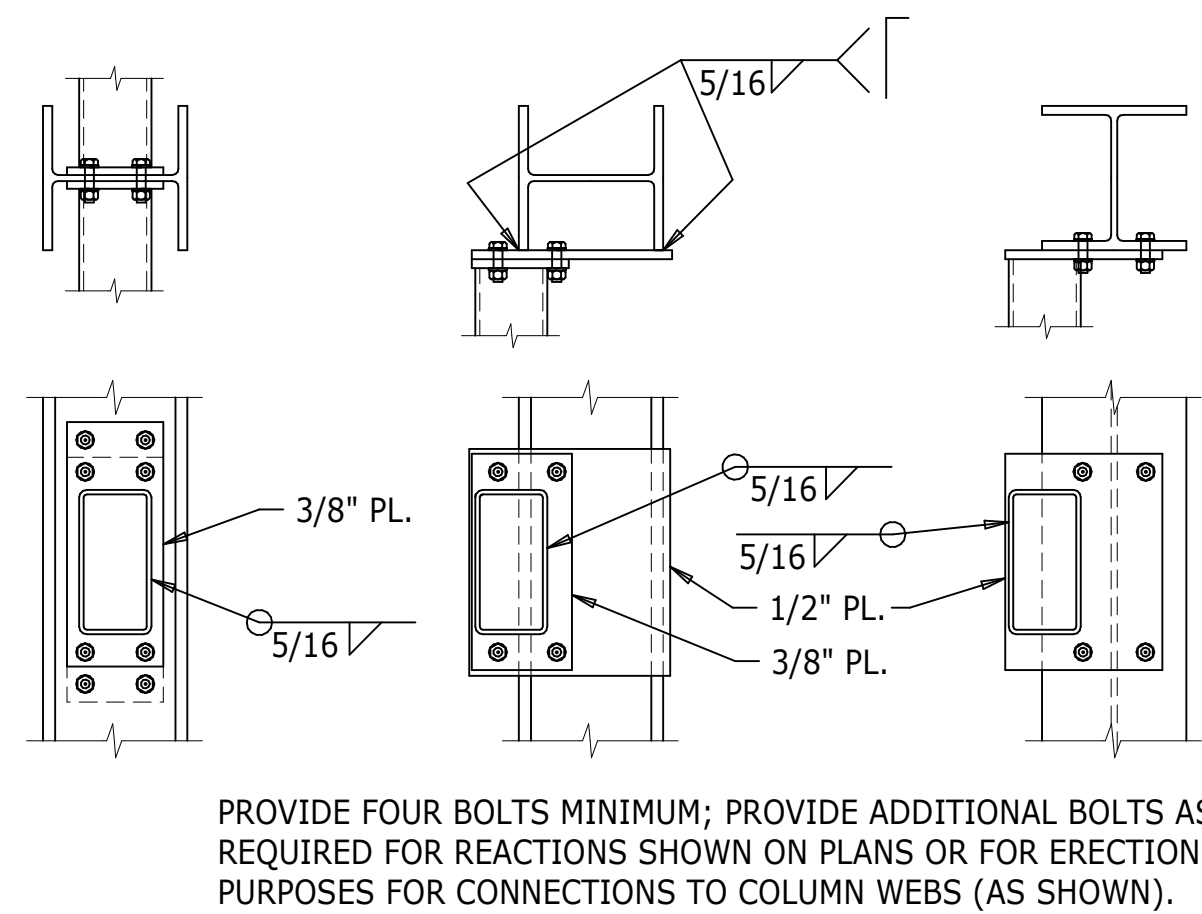


- THIS DETAIL APPLIES AT THE FOLLOWING LOCATIONS:
1. LOCATIONS WHERE OPENINGS ARE REQUIRED PER THE ARCHITECTURAL DRAWINGS OR MECHANICAL DRAWINGS BUT NOT INDICATED ON THE STRUCTURAL DRAWINGS.
 2. LOCATIONS WHERE OPENINGS ARE SHOWN ON THE STRUCTURAL DRAWINGS BUT WHERE MEMBER SIZES ARE NOT INDICATED.
 3. LOCATIONS WHERE NEW OPENINGS ARE INSTALLED IN EXISTING SLABS ON METAL DECK.

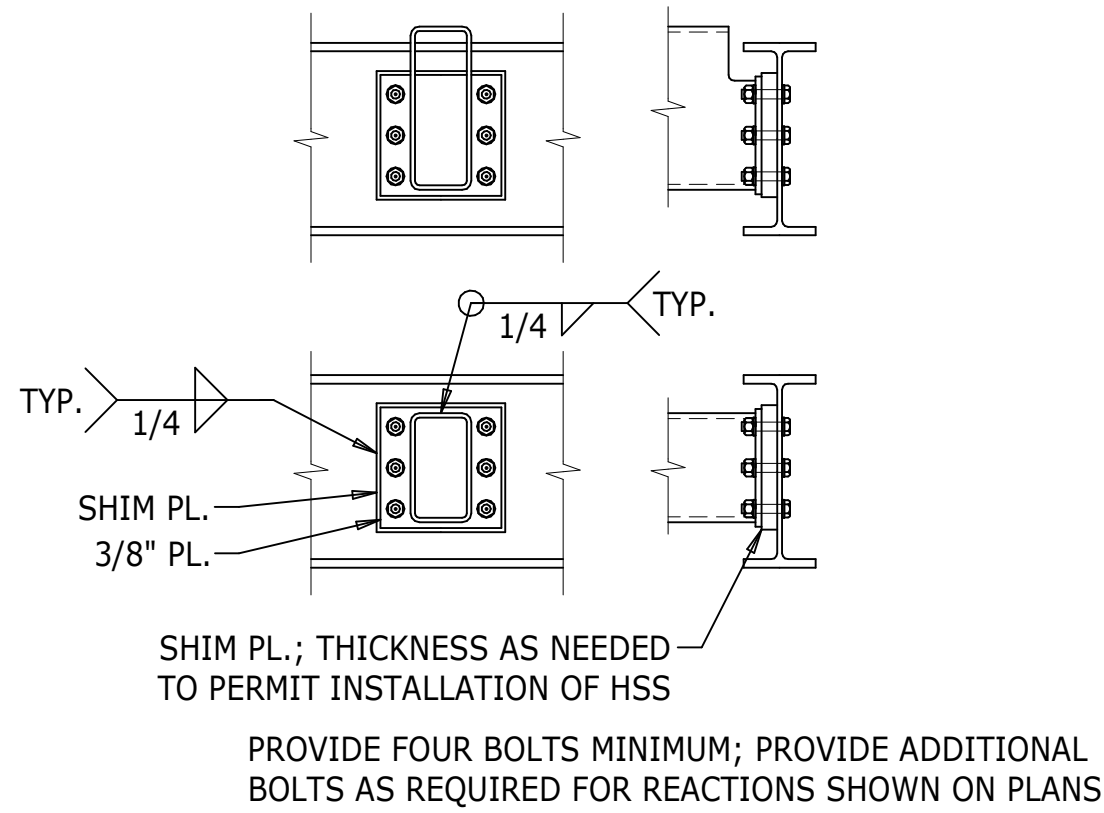
5 SUPPLEMENTAL FRAMING AT OPENINGS IN SLAB ON METAL DECK



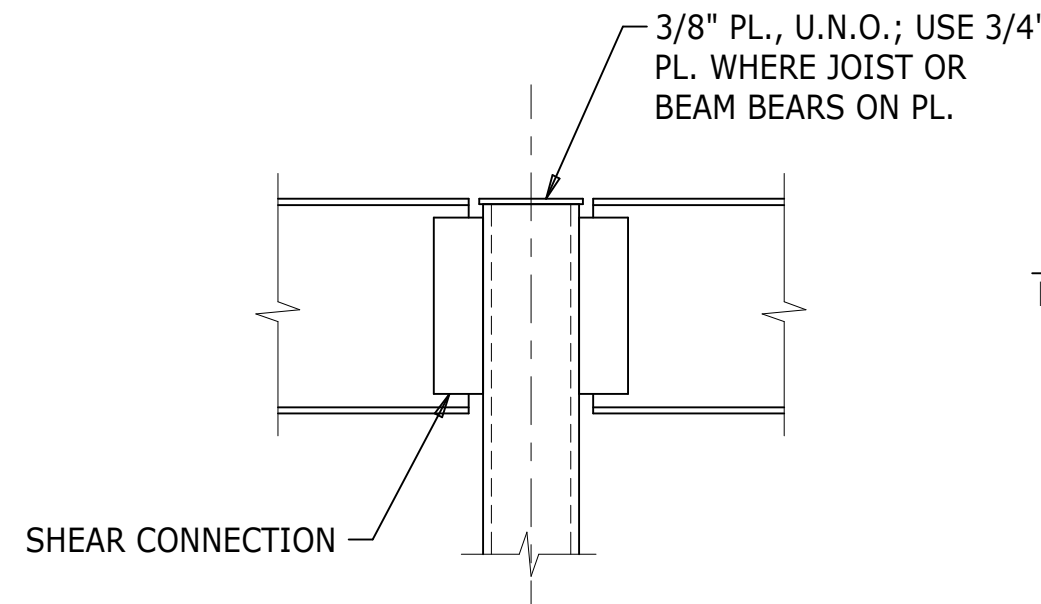
6 ADDITIONAL FRAMING AT MULTIPLE SLEEVES THROUGH SLAB ON METAL DECK



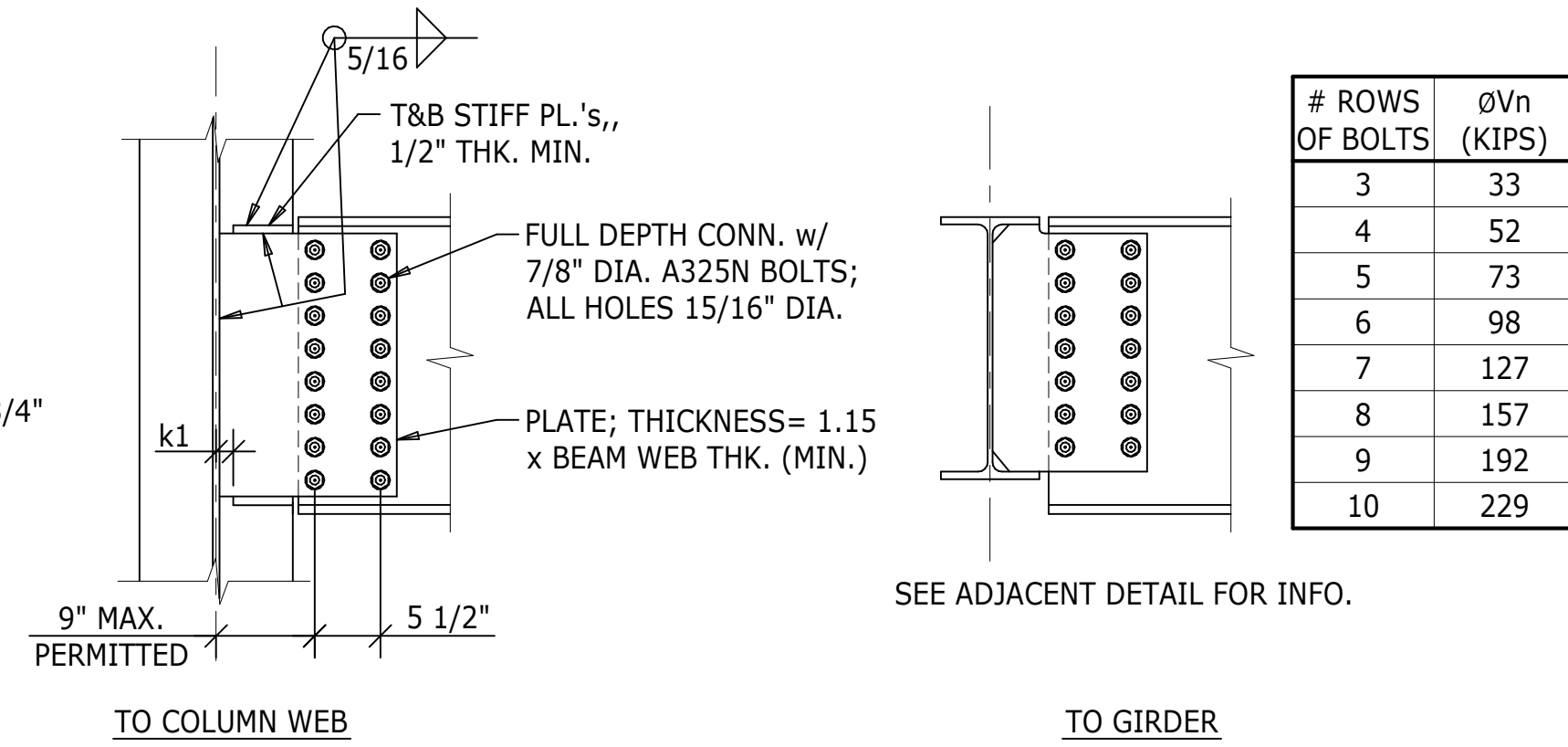
7 HSS CONNECTIONS TO COLUMNS



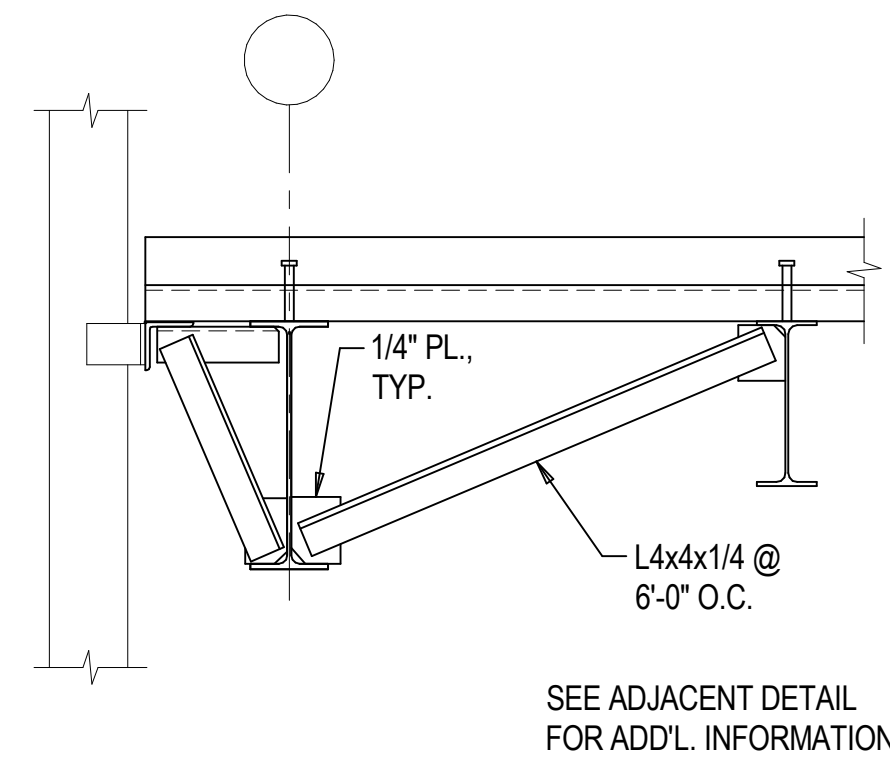
8 HSS CONNECTION TO W SHAPE BEAMS



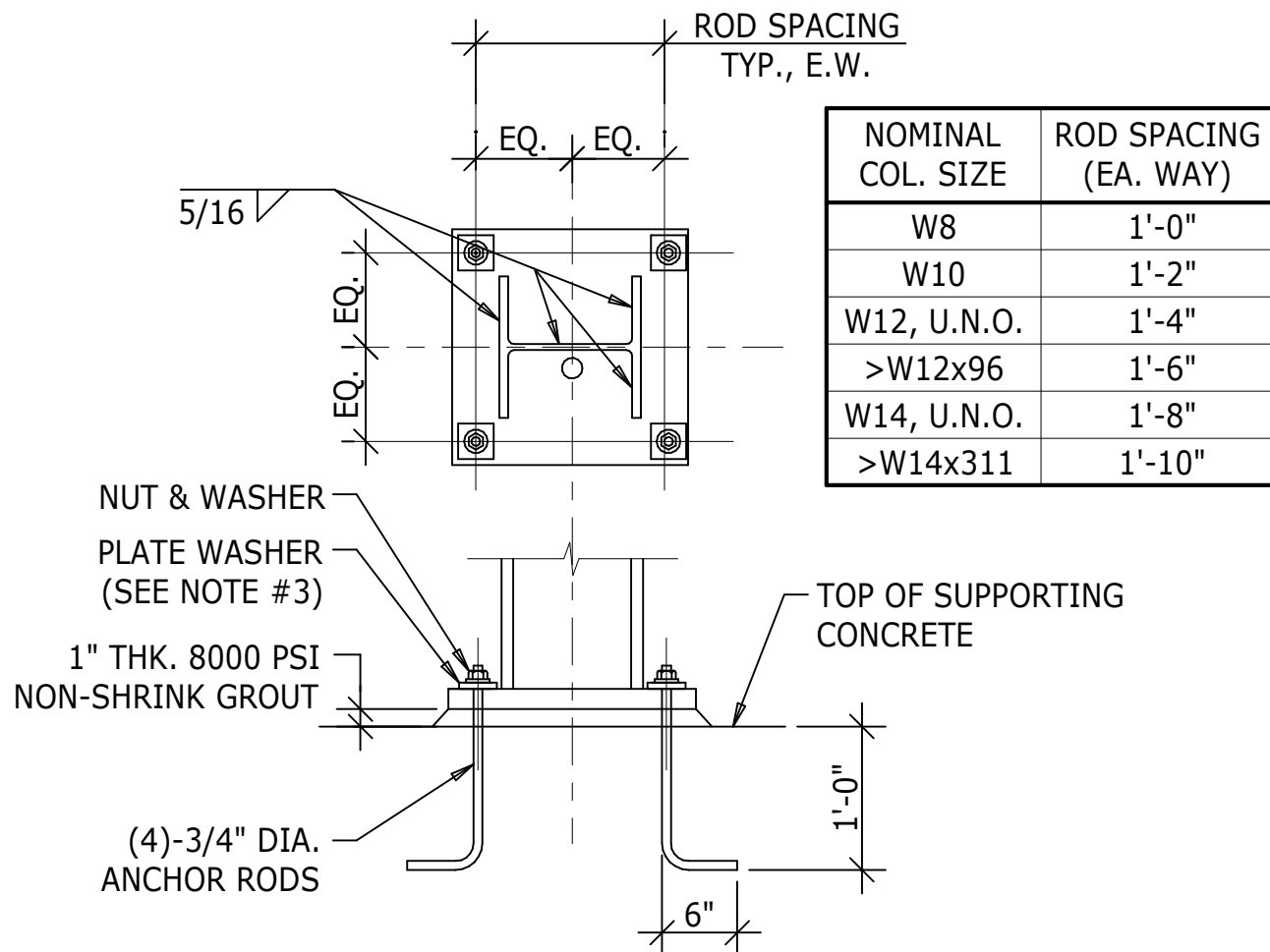
9 BEAM CONNECTION TO HSS OR PIPE COLUMN



10 EXTENDED SHEAR TAB CONNECTIONS

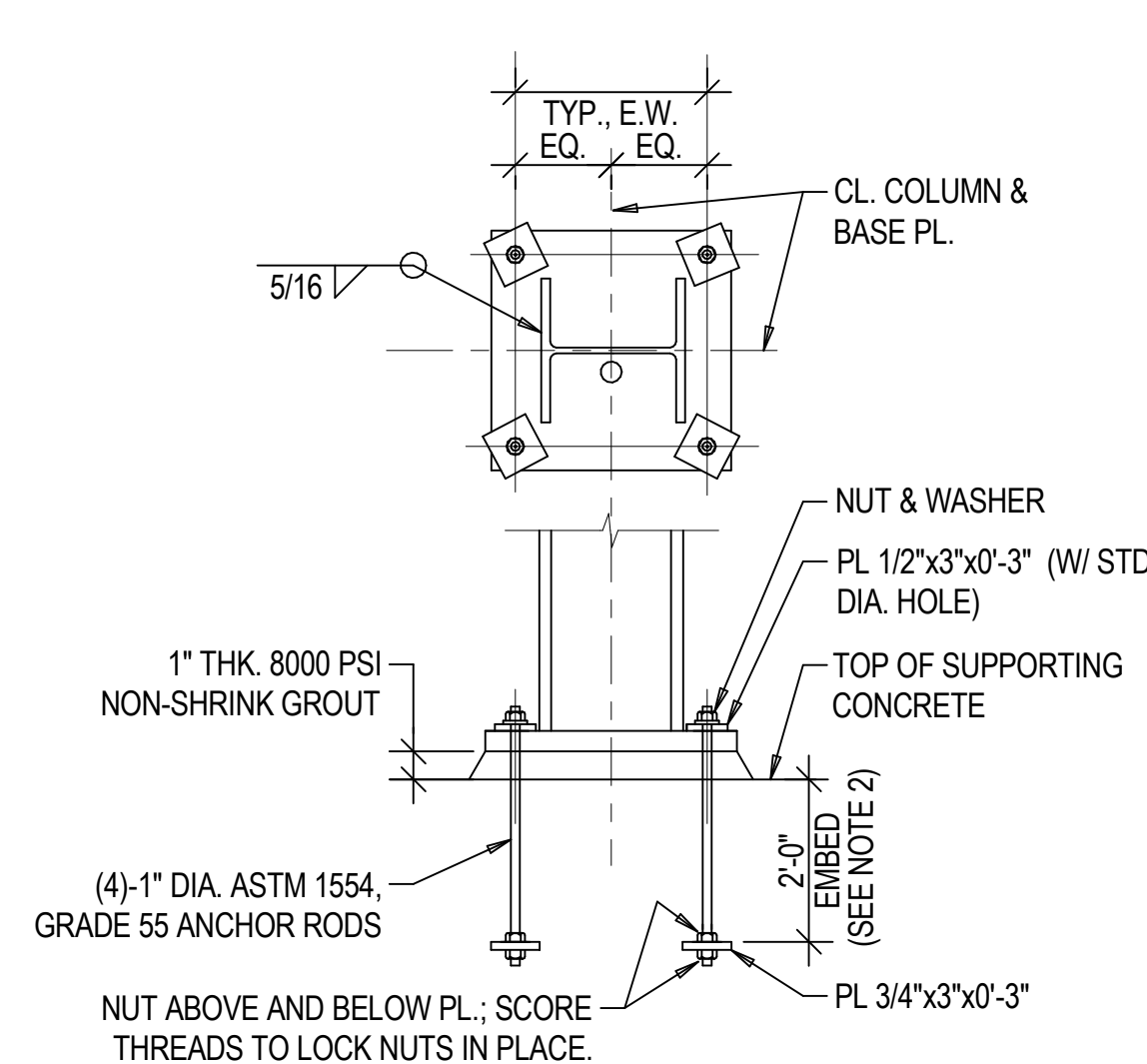


11 SKEWED BEAM CONNECTIONS



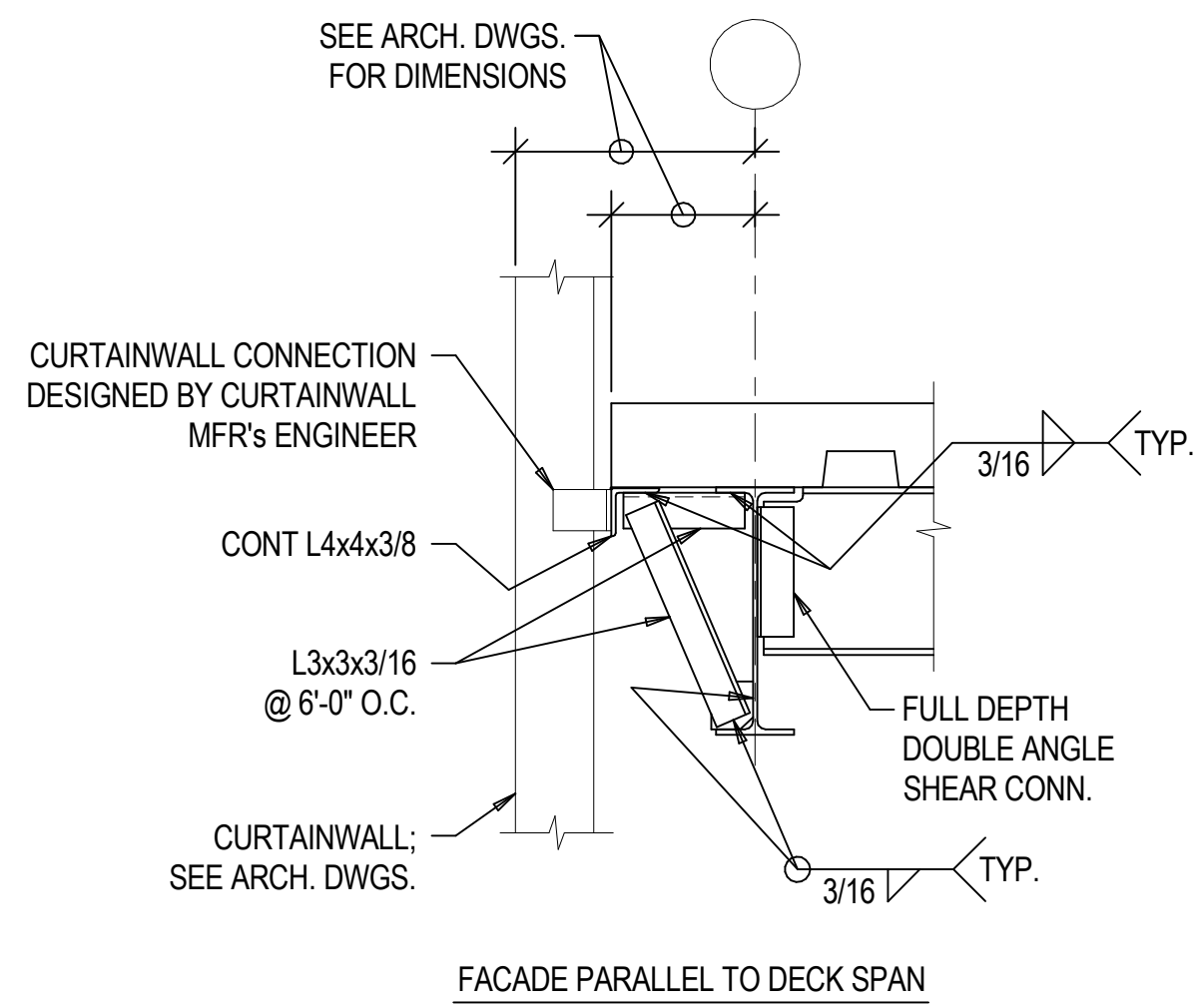
- NOTES:
1. THIS DETAIL APPLICABLE AT ALL COLUMN BASE PLATES EXCEPT WHERE OTHER BASE PLATE ANCHOR ROD DETAILS ARE SPECIFIED.
 2. ANCHOR ROD HOLES IN BASEPLATE SHALL BE SIZED PER TABLE 14-2 IN THE 13TH ED. AISC MANUAL OF STEEL CONSTRUCTION.
 3. SEE TABLE 14-2 IN THE 13TH ED. AISC MANUAL OF STEEL CONSTRUCTION FOR PLATE WASHER DIMS.; HOLE DIA. IN PLATE WASHER SHALL BE 1/16" LARGER THAN BOLT DIA.
 4. W COLUMN SHOWN; HSS AND PIPE COLUMNS SIMILAR.

12 COLUMN BASE PLATE AND ANCHOR RODS

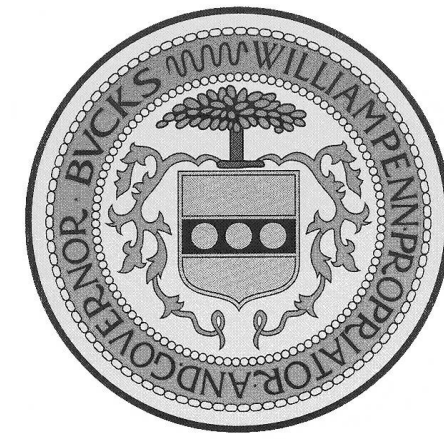


- NOTES:
1. ANCHOR ROD HOLES IN BASEPLATE SHALL BE SIZED PER TABLE 14-2 IN THE 13TH ED. AISC MANUAL OF STEEL CONSTRUCTION.
 2. FOR COST ESTIMATION PURPOSES CONSIDER 4'-0" EMBED AT BRACED FRAME COLUMNS.

13 COLUMN BASE PLATE WITH HEADED ANCHOR RODS



14 CURTAINWALL CONNECTION TO FLOOR SLAB (W/ CONT. ANGLE)



Project
BUCKS COUNTY JUSTICE CENTER
Doylestown, PA
Prepared For
County of Bucks



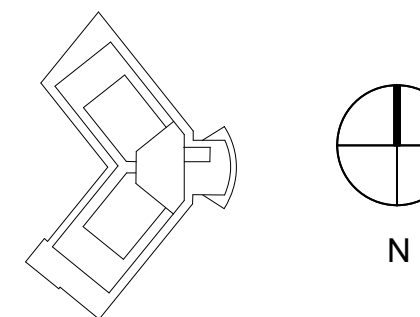
HOK
620 Sixth Avenue 6th Floor
New York, NY 10011 USA
t +1 212 741 1200 f +1 212 633 1163
Canal House 3223 Grace St. N.W.
Washington, DC 20007 USA
t +1 202 944 1500 f +1 202 339 8800

All reproduction & intellectual property rights reserved © 2008
In Association with:



THE HARMAN GROUP
structural engineers
parking consultants
900 West Valley Forge Road, Suite 200, King of Prussia, PA 19406-4525
610.337.3360 vc • 610.337.3359 fx • www.harmangroup.com

Key Plan



No.	Issue Description	YYYY-MM-DD
A	100% SCHEMATIC DESIGN	2009/10/01
B	100% DESIGN DEVELOPMENT	2010/03/12
C	PLAZA WALL DESIGNS	2010/07/19
D	70% SUBMISSION	2010/08/09
1	ISSUED FOR BID	2010/09/27

No.	Revision Description	YYYY-MM-DD
-----	----------------------	------------

Drawn by JAD Reviewed by CCG
Project No 09.07001.00 / 208104.00

Sheet Title

TYPICAL DETAILS

Original drawing is 42 x 30. Do not scale contents of this drawing.
Sheet Number

S3003